

Dual-Purpose Vehicle RFID Windshield/Headlamp Tag Installation Guide

Choosing a Proper Tag Mounting Location:



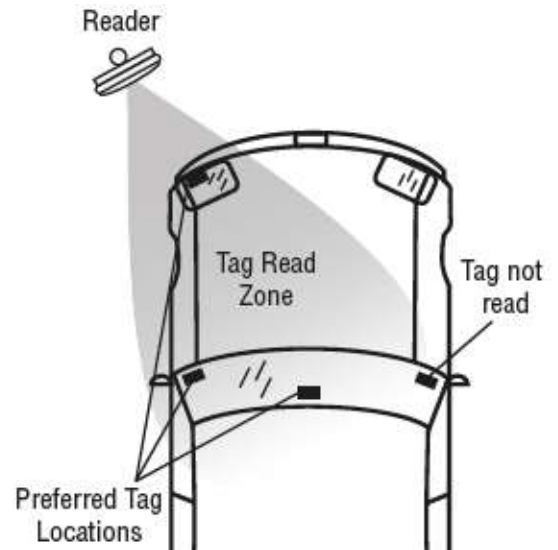
For optimum performance, LiftMaster Dual-Purpose RFID Tag (Windshield/Headlamp) must be installed on a windshield location or other suitable mounting point that is facing the RFID reader during normal driving.

Cure Time:

Once the tag has been installed on the vehicle, there will be a period of time necessary to allow the tag's adhesive to cure. Due to temperature and humidity variations the total cure time may vary. Most applications will experience an 80% cure of the adhesive within 1 hour and full adhesive cure within 24 hours of application. **Please do not wash the area where the tag is installed or disturb the tag for 24 hours after installation.**

RFID Tag Removal:

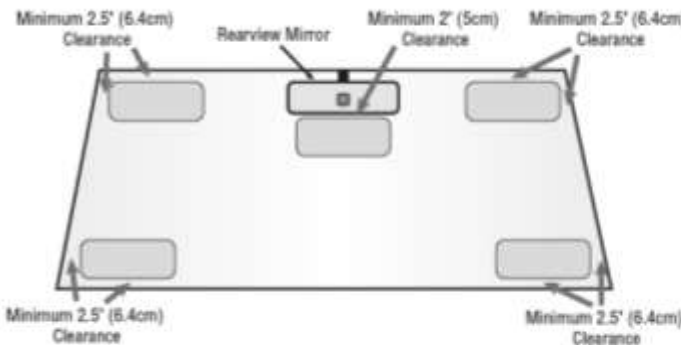
1. Gently peel the top layer of the RFID tag from the vehicle surface, the adhesive and antenna layer should remain on the vehicle and is a function of the tag's security.
2. Generously spray a mild glass cleaner on the adhesive layer and let it soak in for around 10-20 seconds.
3. Using a micro-fiber towel or cloth, rub the adhesive with the towel in a circular motion. The adhesive should pull up in a similar manner to rubber cement.
4. Repeat steps 2 and 3 until all the adhesive is removed.



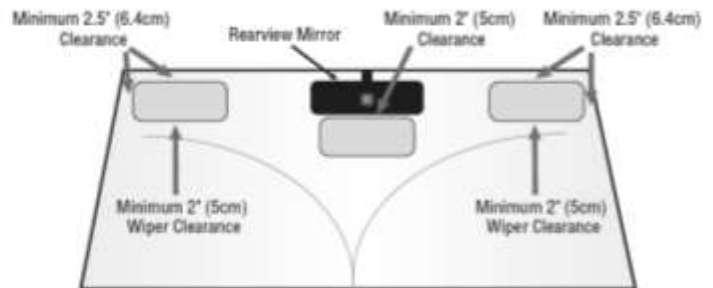
Windshield Tag Installation Guide

Dual-Purpose RFID Tag Mounting – Windshield:

The diagram below showing suitable mounting locations of windshield RFID tags. Choose a tag mounting location that meets your local vehicle code and is at least 2.5" (6.4 cm) from any materials containing metal. This includes the vehicle roof line, side pillars and review mirror mounting block. Make sure that the tag is not behind any metallic surface or darkened trim around the window.



Interior Windshield Mounting Locations and Clearances



Optional Exterior Windshield Tag Mounting Locations and Clearances

Dual-Purpose Vehicle RFID Tag Windshield Handling & Installation:

NOTE: Care should be given when mounting tags to windows or headlamp lenses containing conductive coatings or embedded radio antennas. These are often found on high-end vehicles. These can reduce the range or block RFID from working altogether.

Step 1 – Make sure that the intended mounting surface is clean and free of any contaminants.

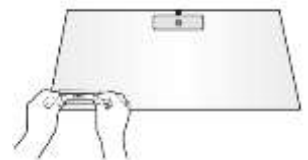


Step 2 – Transfer the tag to the location on the vehicle that you have determined suitable for your application.



NOTE: Handle the tag with care during installation. Do not excessively bend or distort the tag when removing it from the liner.

Step 3 – Smooth out the tag to ensure complete adhesion and remove any air pockets. It is best to apply the tag by the edges as showing the picture to the right.



NOTE: Once the tag has been mounted, **do not attempt to remove the tag.** This will damage the tag and tag will become inoperable.

Headlamp Tag Installation Guide

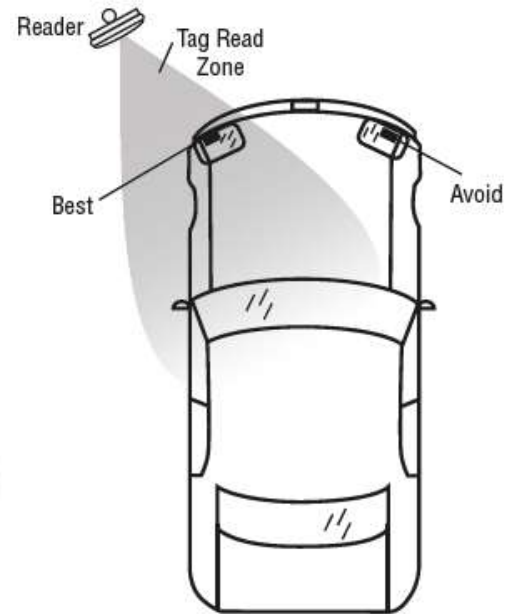
Dual-Purpose RFID Tag Mounting – Headlamp:

For optimum performance, the RFID tag must be installed on the headlight lens or other suitable mounting location that is facing the RFID reader during normal driving.

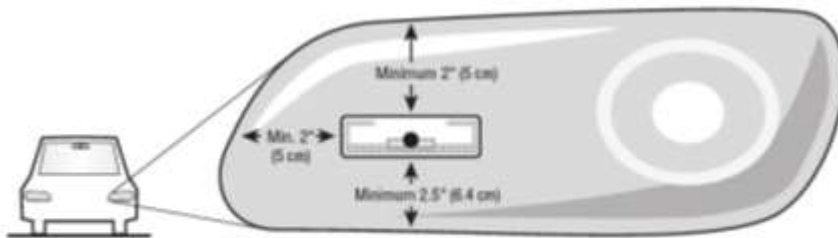
Alternative Mounting:

If mounting to the vehicle's headlamp is not feasible, you may also choose to mount the tag on other plastic surfaces, such as the vehicle's bumper, valance or side mirror. Many of the preceding guidelines will still apply and the tag must still be mounted a minimum of 2" (5 cm) from any metal structures. This includes any metal structures behind the bumper, such as metal grilles, bumper mounts or the vehicle's frame.

Choose a mounting location for the tag at least 2" (5 cm) from any material containing metal and approximately 2.5" (6.4 cm) from the bottom reflector.

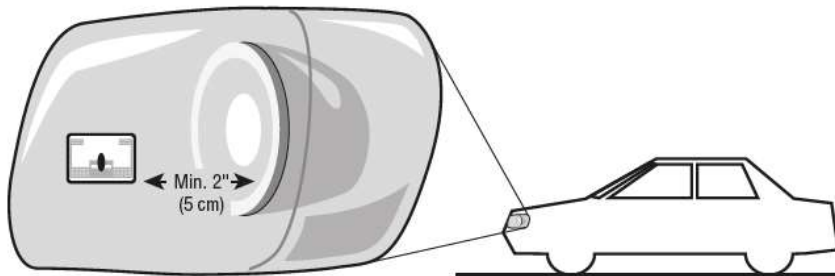


Driver Side Reader Placement



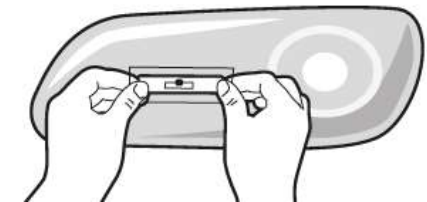
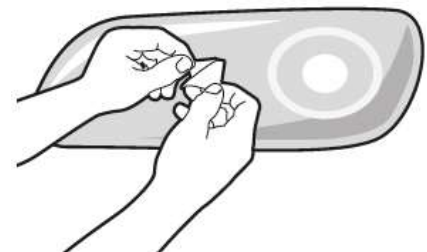
Car Headlamp (front view)

Clearance Shown for Distance between Hood, Body Panel and Bumper



Car Headlamp (side view)

Clearance Shown for Distance between Headlamp Reflector Housing



Dual-Purpose Vehicle RFID Tag Headlamp Handling & Installation:

NOTE: Care should be given when mounting tags to windows or headlamp lenses containing conductive coatings or embedded radio antennas. These are often found on high-end vehicles. These can reduce the range or block RFID from working altogether.

Step 1 – Make sure that the intended mounting surface is clean and free of any contaminants.

NOTE: Handle the tag with care during installation. Do not excessively bend or distort the tag when removing it from the liner.

Step 2 – Transfer the tag to the location on the vehicle that you have determined suitable for your application. It is best to apply the tag by the edges as shown in the picture.

Step 3 – Smooth out the tag to ensure complete adhesion and remove any air pockets.

NOTE: Once the tag has been mounted, **do not attempt to remove the tag.** This will damage the tag and tag will become inoperable.