

PLAT SHOWING Moon Valley Subdivision No. 4

PLAT BOOK _____ PAGE _____

A portion of the West Half of
Section 15, Township 4 North, Range 1 West, Boise Meridian,
City of Star, Ada County, Idaho.
2021

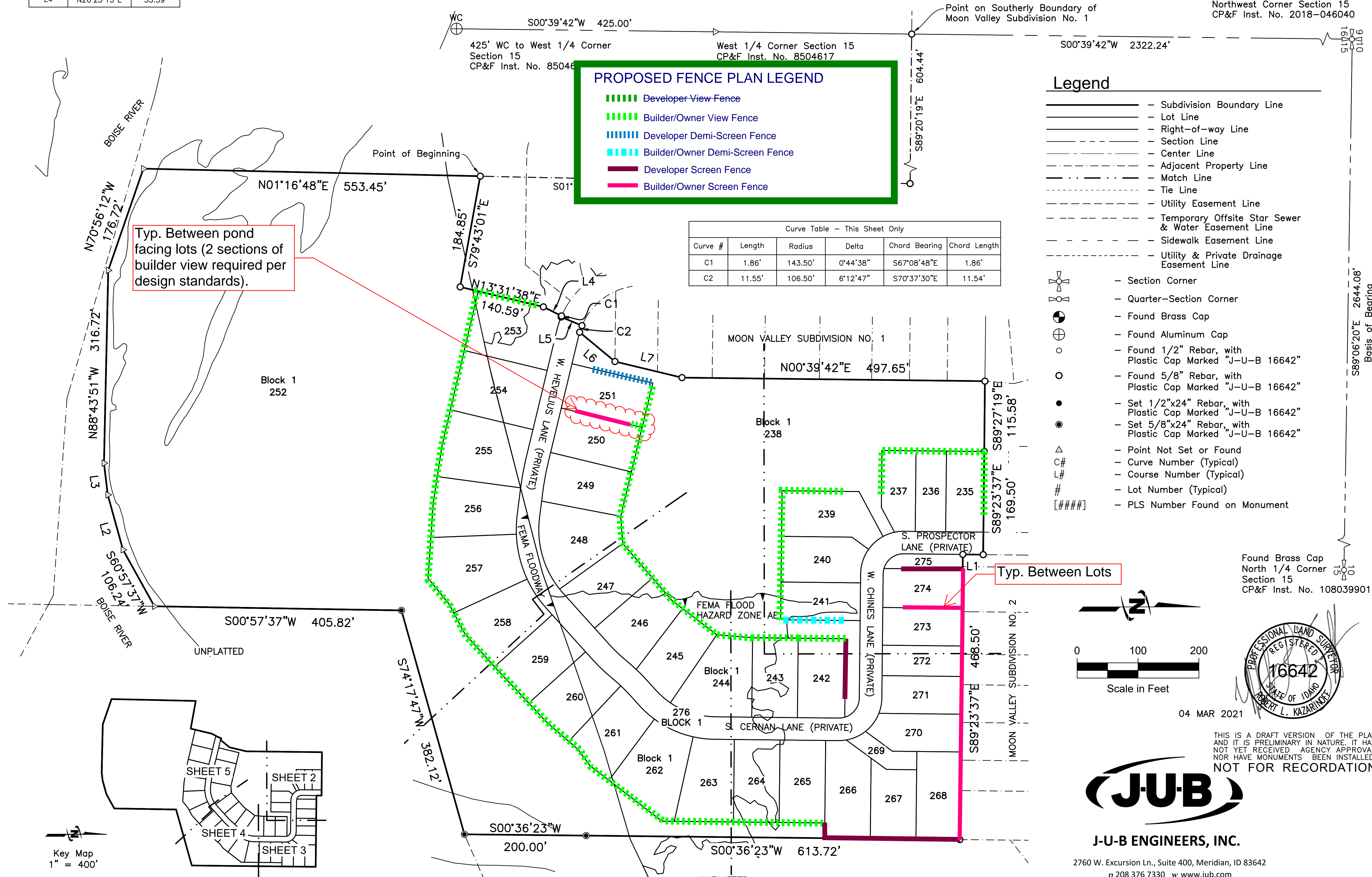
Line #	Direction	Length
L1	S00°36'23"W	33.41'
L2	S74°30'16"W	93.66'
L3	S83°09'42"W	52.55'
L4	N26°25'15"E	33.39'

Line #	Direction	Length
L5	N22°28'53"E	37.00'
L6	N39°40'01"E	75.38'
L7	N13°31'44"E	113.19'

PROPOSED FENCE PLAN LEGEND

- Developer-View Fence
- Builder/Owner View Fence
- Developer Demi-Screen Fence
- Builder/Owner Demi-Screen Fence
- Developer Screen Fence
- Builder/Owner Screen Fence

Curve #	Length	Radius	Delta	Chord Bearing	Chord Length
C1	1.86'	143.50'	0°44'38"	S67°08'48"E	1.86'
C2	11.55'	106.50'	6°12'47"	S70°37'30"E	11.54'

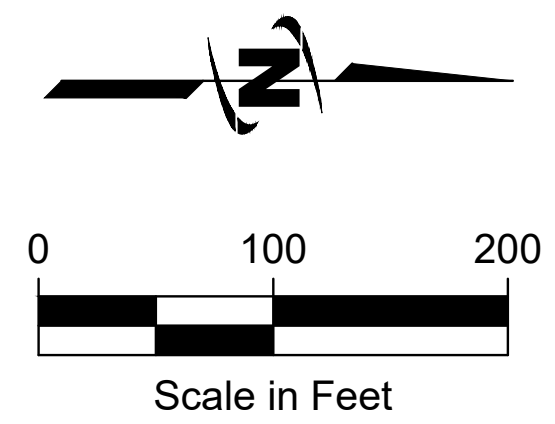
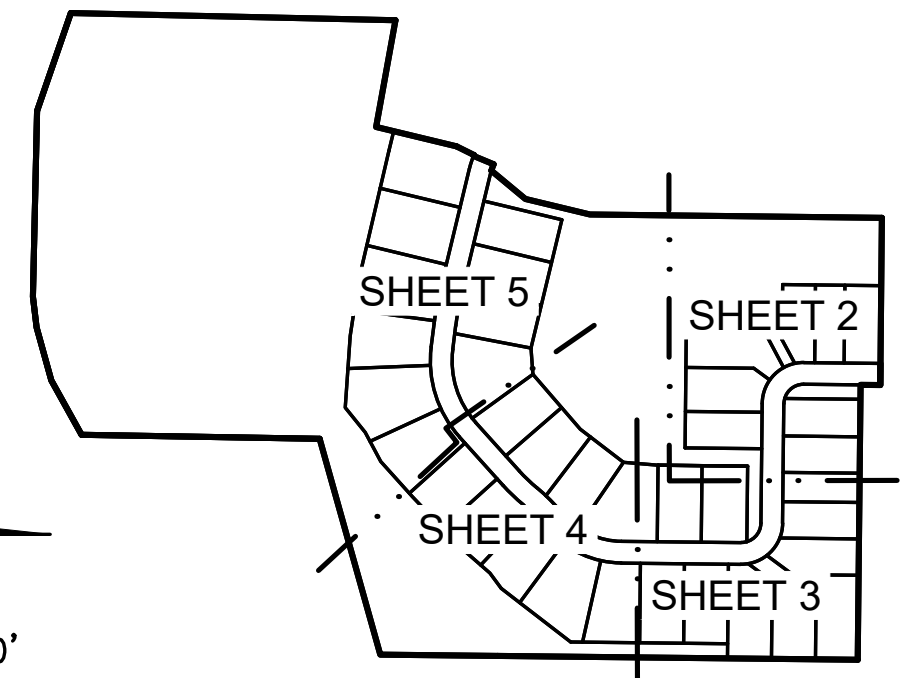


- Legend**
- Subdivision Boundary Line
 - Lot Line
 - Right-of-way Line
 - Section Line
 - Center Line
 - Adjacent Property Line
 - Match Line
 - Tie Line
 - Utility Easement Line
 - Temporary Offsite Star Sewer & Water Easement Line
 - Sidewalk Easement Line
 - Utility & Private Drainage Easement Line
-
- Section Corner
 - Quarter-Section Corner
 - Found Brass Cap
 - Found Aluminum Cap
 - Found 1/2" Rebar, with Plastic Cap Marked "J-U-B 16642"
 - Found 5/8" Rebar, with Plastic Cap Marked "J-U-B 16642"
 - Set 1/2"x24" Rebar, with Plastic Cap Marked "J-U-B 16642"
 - Set 5/8"x24" Rebar, with Plastic Cap Marked "J-U-B 16642"
 - Point Not Set or Found
 - C# - Curve Number (Typical)
 - L# - Course Number (Typical)
 - # - Lot Number (Typical)
 - [#####] - PLS Number Found on Monument

Typ. Between pond facing lots (2 sections of builder view required per design standards).

Typ. Between Lots

Key Map
1" = 400'



04 MAR 2021

THIS IS A DRAFT VERSION OF THE PLAT AND IT IS PRELIMINARY IN NATURE. IT HAS NOT YET RECEIVED AGENCY APPROVAL NOR HAVE MONUMENTS BEEN INSTALLED.
NOT FOR RECORDATION



J-U-B ENGINEERS, INC.

2760 W. Excursion Ln., Suite 400, Meridian, ID 83642
p 208 376 7330 w www.jub.com
JUB Project No. 10-20-133