

Top 3 Reasons for Proximity Card Malfunctions:

#1 Physical Damage

Proximity access cards are easily bendable. Unfortunately, once a proximity card is bent, it will damage the antenna and chip in the card. Once the card is bent, the connection in the antenna is immediately damaged. Even putting the card in your back pocket and sitting down could cause a disruption in the antenna, thereby making the card unreadable.

A solution for this is to ensure that your proximity badge does not get put in a place where it is easily bendable (like pockets, bags, etc.). If the badge is on a lanyard around one's neck, for example, it is unlikely chance of getting bent. To add even more protection to your proximity badge, you can buy a cover or sleeve to put the card in. This acts as a case for your card that will insure continual and reliable use.

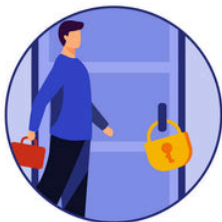
#2 Magnetic Interference

Another common reason for a proximity access card to stop working is from magnetic interference. Strong magnetic forces will damage the card by interfering with the data programmed on the card. The magnet force will cause the card to be unreadable on card readers and other devices. Items that could damage the proximity card are fridge magnets, smartphones, metal clasps on wallets, etc.

To avoid damaging the proximity access card, keep it away from items that emit a strong magnetic field. This will ensure that the data and programming on the card does not get damaged and will continue to work as intended.

#3 Restriction

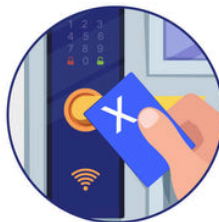
Another common reason for a proximity badge to not work on a building could simply be from the card not having the required access clearance. If this is happening, you will need to contact your association manager to learn more.



You're attempting to enter an area that you are not allowed to enter.



Your access privileges are being restricted by the access control administrator.



Your credential has become demagnetized.



Your credential has been damaged by excess heat, water etc.



The antenna has disconnected from the chip in your credential.